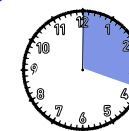




Route Cala Estreta - S'Arenalet - Sa Pena Roja spring

Type of terrain: TRACK: 9.4 km
ASPHALT: 2.6 km



Distance: 12 km
Time: 3 hrs 30 min
Difficulty: moderate
Type of route: circular

DESCRIPTION OF ITINERARY:

This walk takes us close to the sea, an alternative way to get to the beach of S'Arenalet del Verger and the spring of Sa Pena Roja, which is also accessible inland from S'Alqueria Vella. This route is often used in the summer by those who want to swim in the virgin coves along this coast.

We head in the direction of the Cala Torta cove until we find a small copse of cypress trees in the shape of a rotunda (this is where the excursion starts). Then we head for the cove of Cala Estreta and, once past this, go on towards some of the most popular bays for locals and foreigners alike, such as Matzocs, Sa Font Celada and S'Arenalet. Another of the walk's strong points is the visit to the Tower of Albarca, a defence and watchtower that still has a cast iron cannon on its roof.

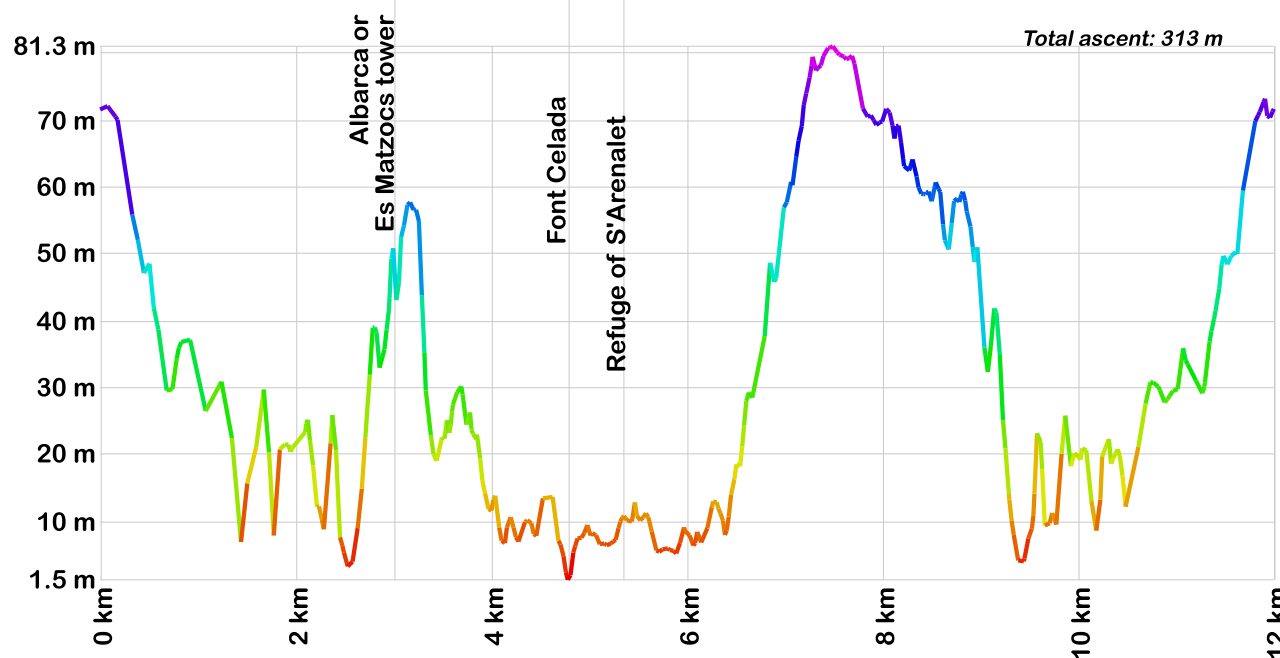
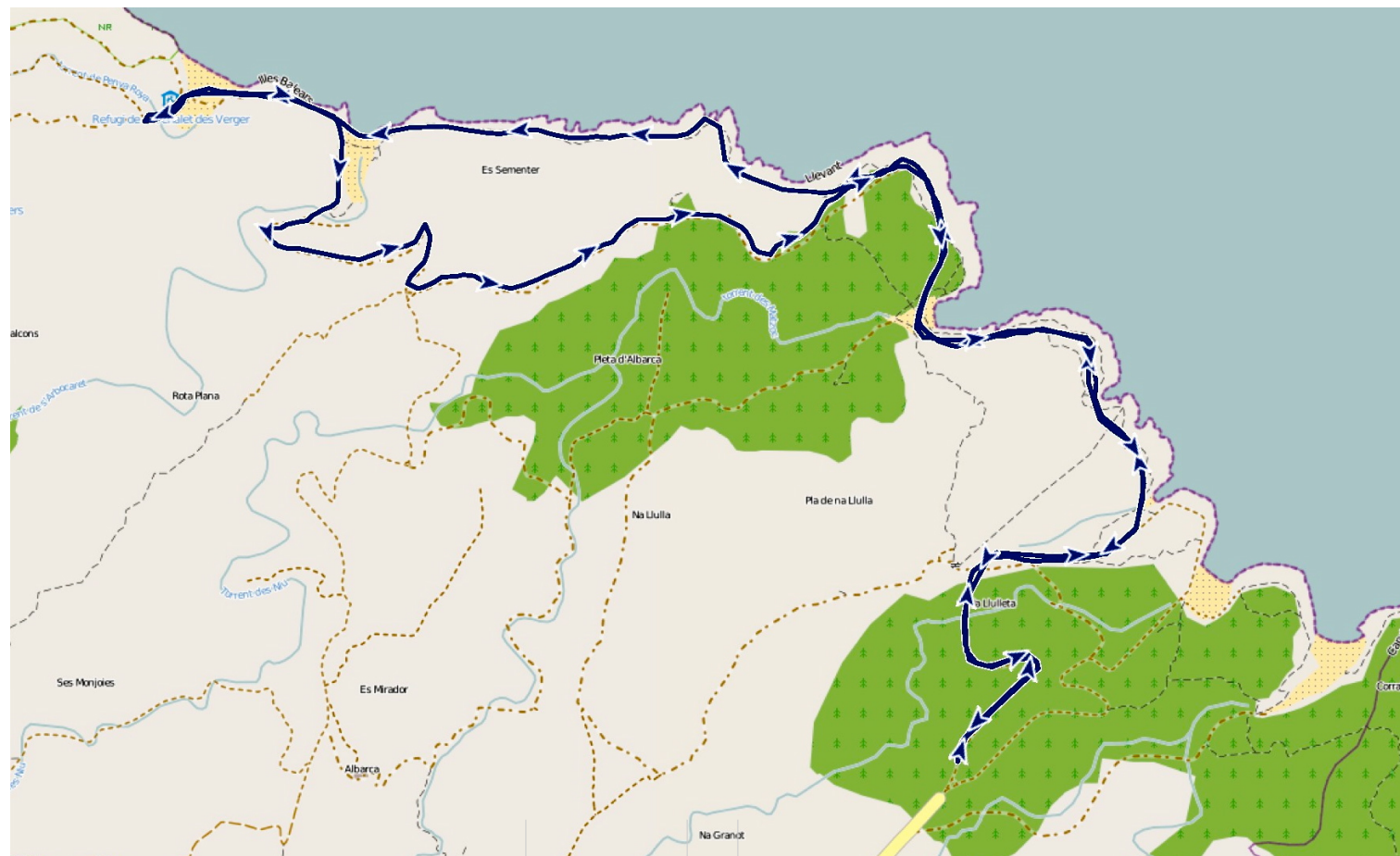
If you'd like to stop for some refreshment, in the camping area behind is the refuge of S'Arenalet.

Apart from plants that are typical of such sandy and rocky coastlines, and also the scrubland and pine woods, a strawberry wood (*Arbutus unedo*) also grows close to the spring of Sa Pena Roja which is a wonderful sight in autumn when its fruit ripens.

NECESSARY EQUIPMENT:
drinks, food, sports clothes and sports shoes, mobile phone, waterproof jacket

RECOMMENDED EQUIPMENT:
walking sticks, sunglasses, sun cream, camera

This route has been taken from the collection of excursions prepared and published by the hiking group "Un raig d'Artanencs".



You can download the route for your GPS at: www.artamallorca.travel/en/routes

Route Cala Estreta - S'Arenalet - Sa Pena Roja spring
Difficulty: moderate
3 hrs 20 min