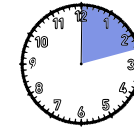


# Route Sa Tudosa peak



Type of terrain: TRACK: 11,4 km  
ASPHALT: 12 km



Distance: 23,4 km  
Time: 2 hrs 30 min  
Difficulty: moderate  
Type of rute: straight line

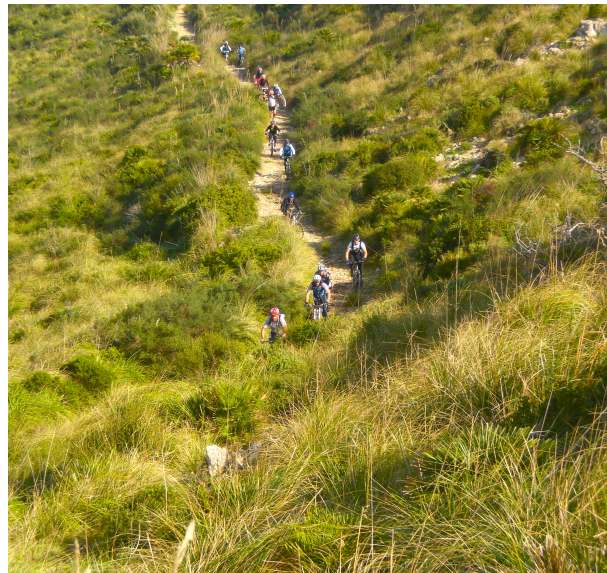
## DESCRIPTION OF ITINERARY

This route runs mostly within the Llevant Nature Park.

It starts at the Plaça del Conqueridor in Artà, heading towards the Nature Park. Up to km 5.4, the route goes along the route from the Betlem hermitage, whose only difficulty is its upward slope.

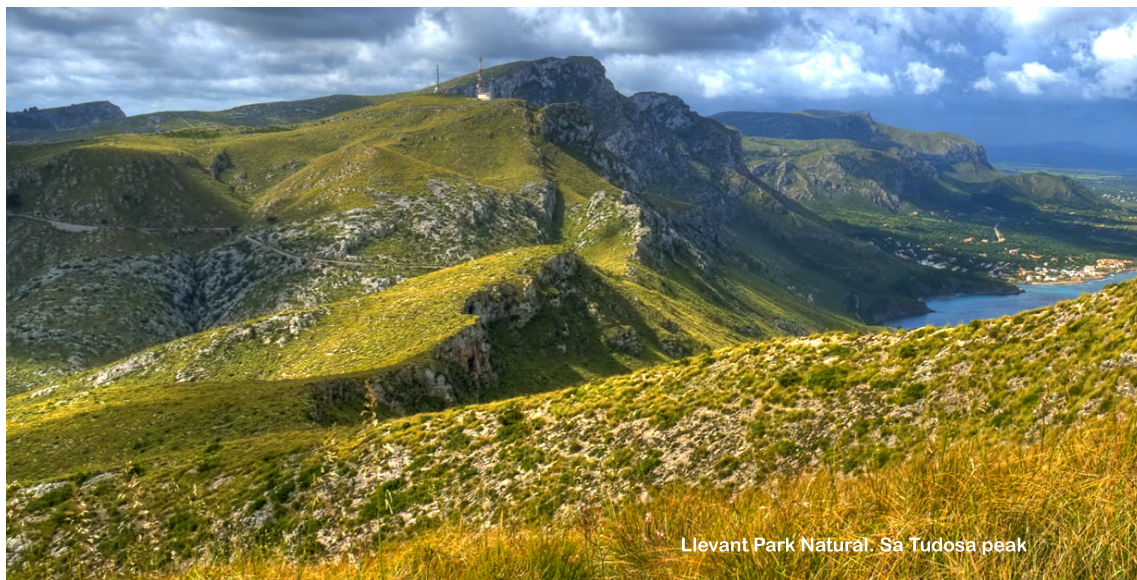
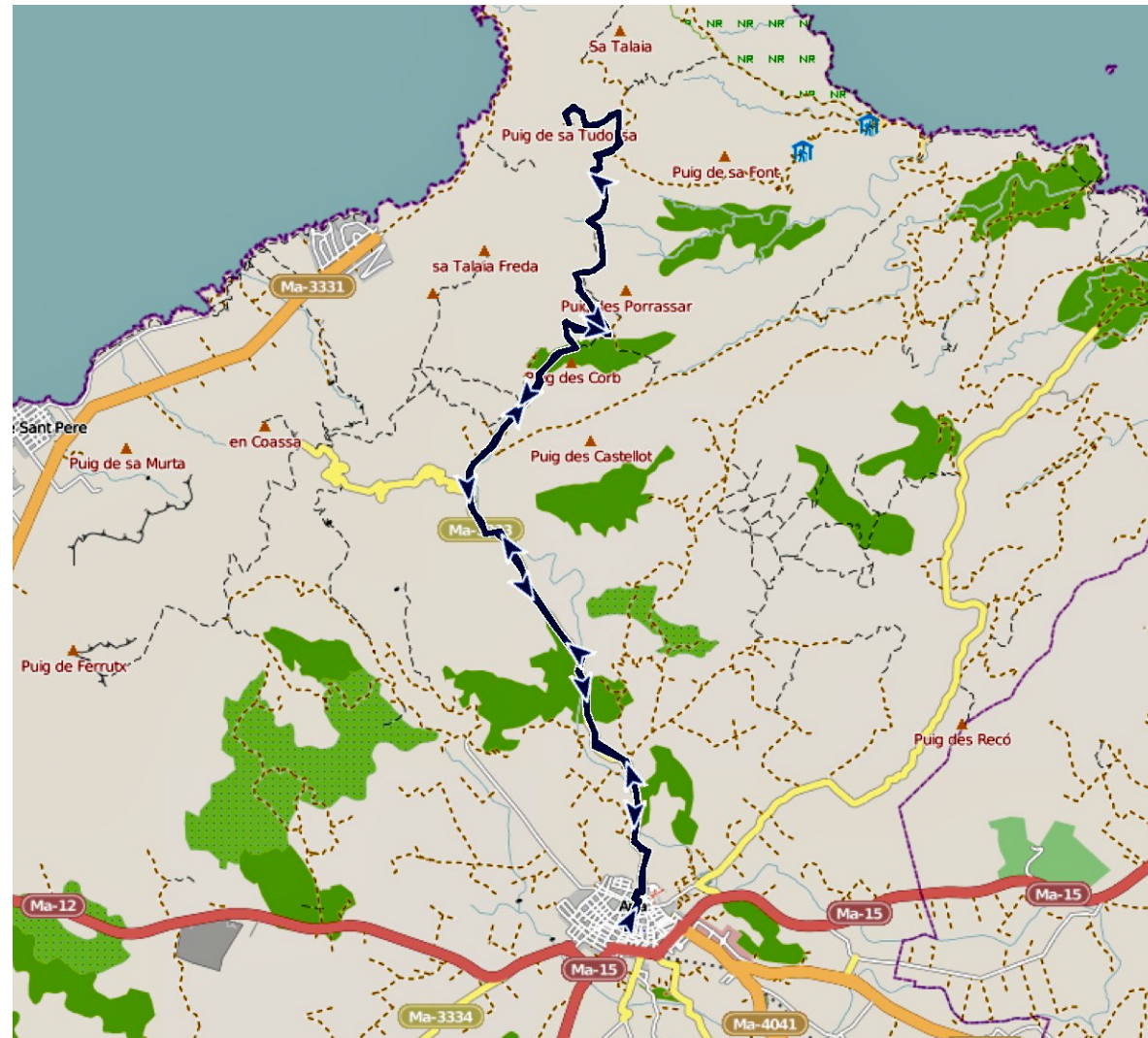
From km 6 to Sa Tudosa peak (km 11.8), the terrain is highly variable, from sections with gravel, used to fill in the potholes in the asphalt, to asphalted sections in bad condition. The last kilometre of ascent to the summit is very steep, although with asphalt in excellent condition.

Once you've reached the top of Sa Tudosa, we return to Artà, back along the same route.

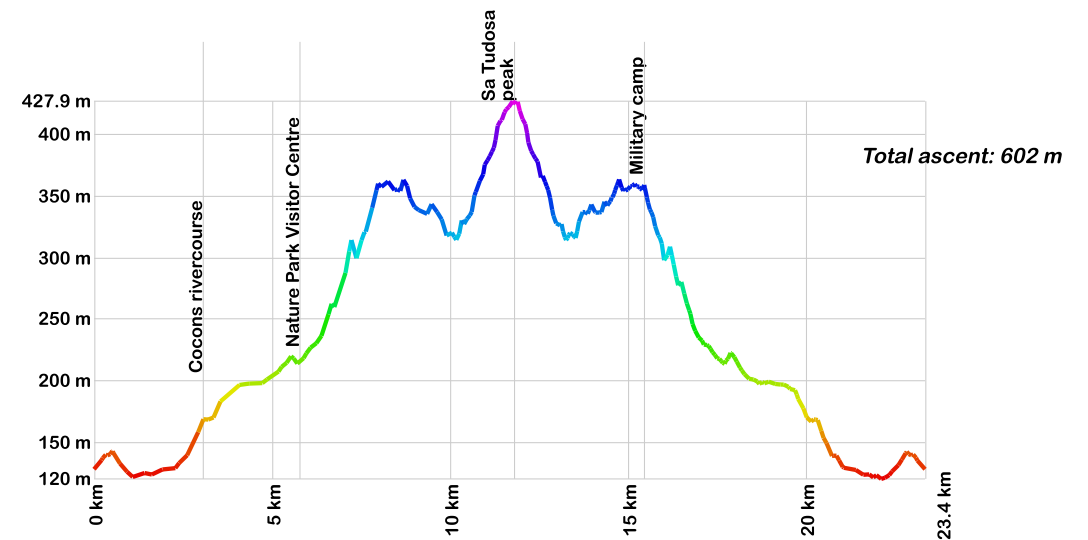


**NECESSARY EQUIPMENT:**  
drinks, food, sports clothes, sports shoes.

**RECOMMENDED EQUIPMENT:**  
cycling clothes, sunglasses, mobile phone, camera.



Llevant Park Natural. Sa Tudosa peak



Route Sa Tudosa peak  
Difficulty: moderate  
2 hrs 30 min